



Green Management

(May Yip)

CSO(PTA)

(Hospital Authority)

**Third Experience Sharing Seminar of
Hong Kong Green Purchasing Charter
(HKGPC)**

(27 June 2008)

Background

- The Hospital Authority is responsible for delivering a comprehensive range of subsidized preventive, curative and rehabilitative services to ensure every citizen has access to affordable health care
- Services are provided through hospitals and other institutions.

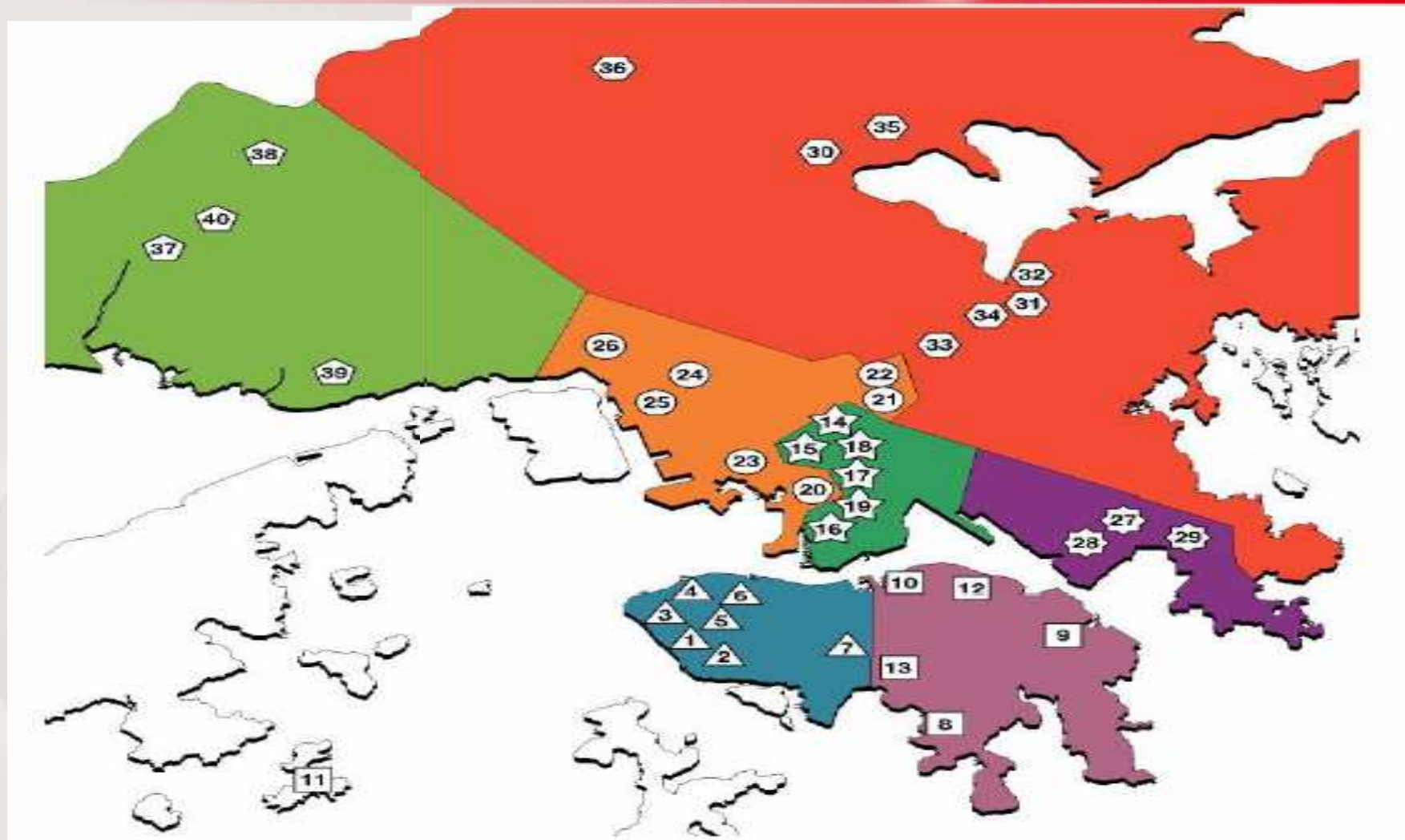
Background

- A statutory body established on 1 December 1990
- Manages all public hospitals in HK, and accountable to the Government through Secretary for Food and Health
- 52,600 staff in Head Office, 40 public hospitals (in 7 clusters), 48 specialist clinics and 75 general clinics
- 27,742 hospital beds in all public hospitals (3.8 hospital beds per 1,000 population)
- Total expenditure in 2005/06 ~HK\$31 Billion (~73% staff cost, ~2.6% building works projects, ~24.4% other expenditures)

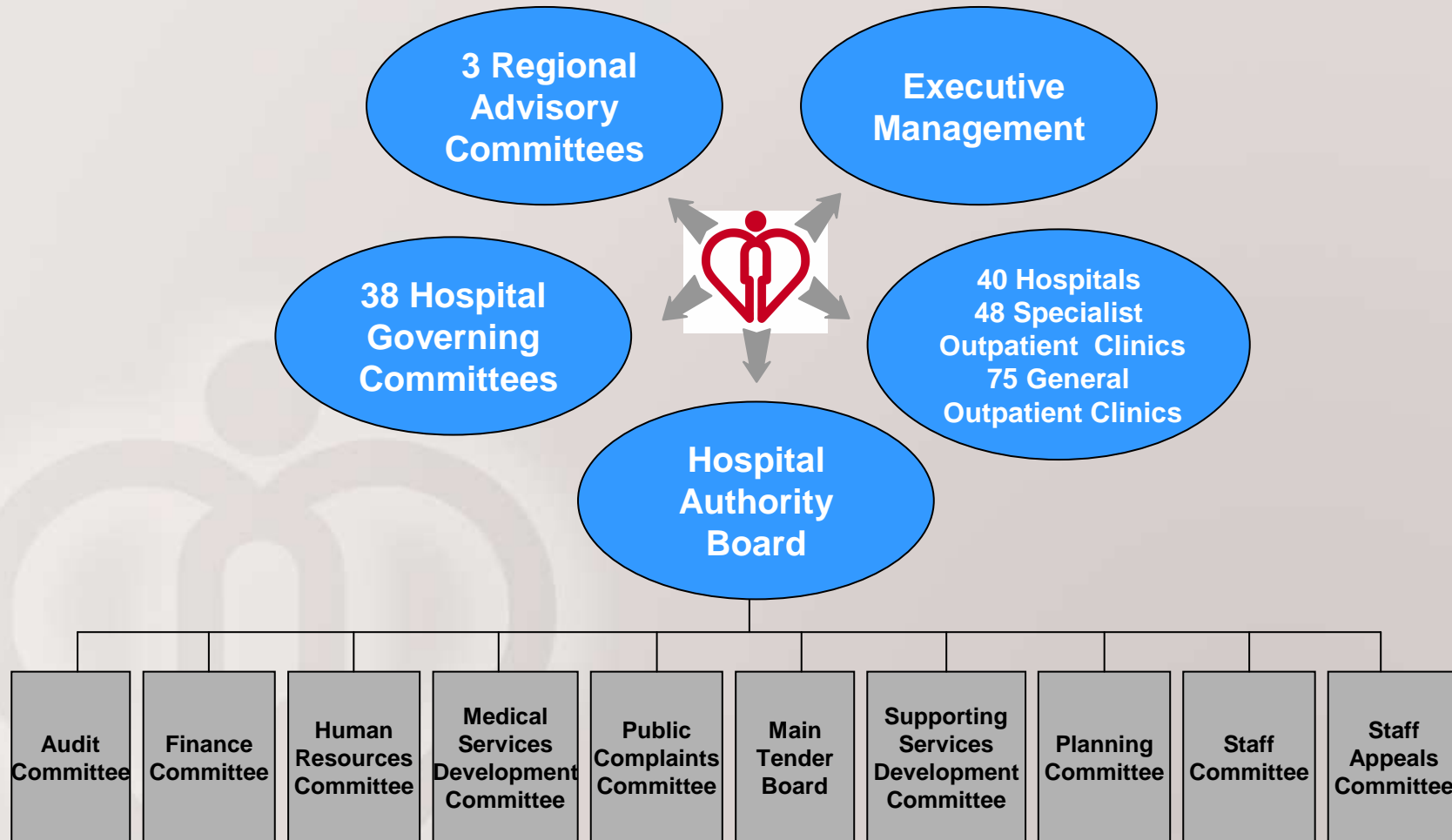


* Data as of 2006

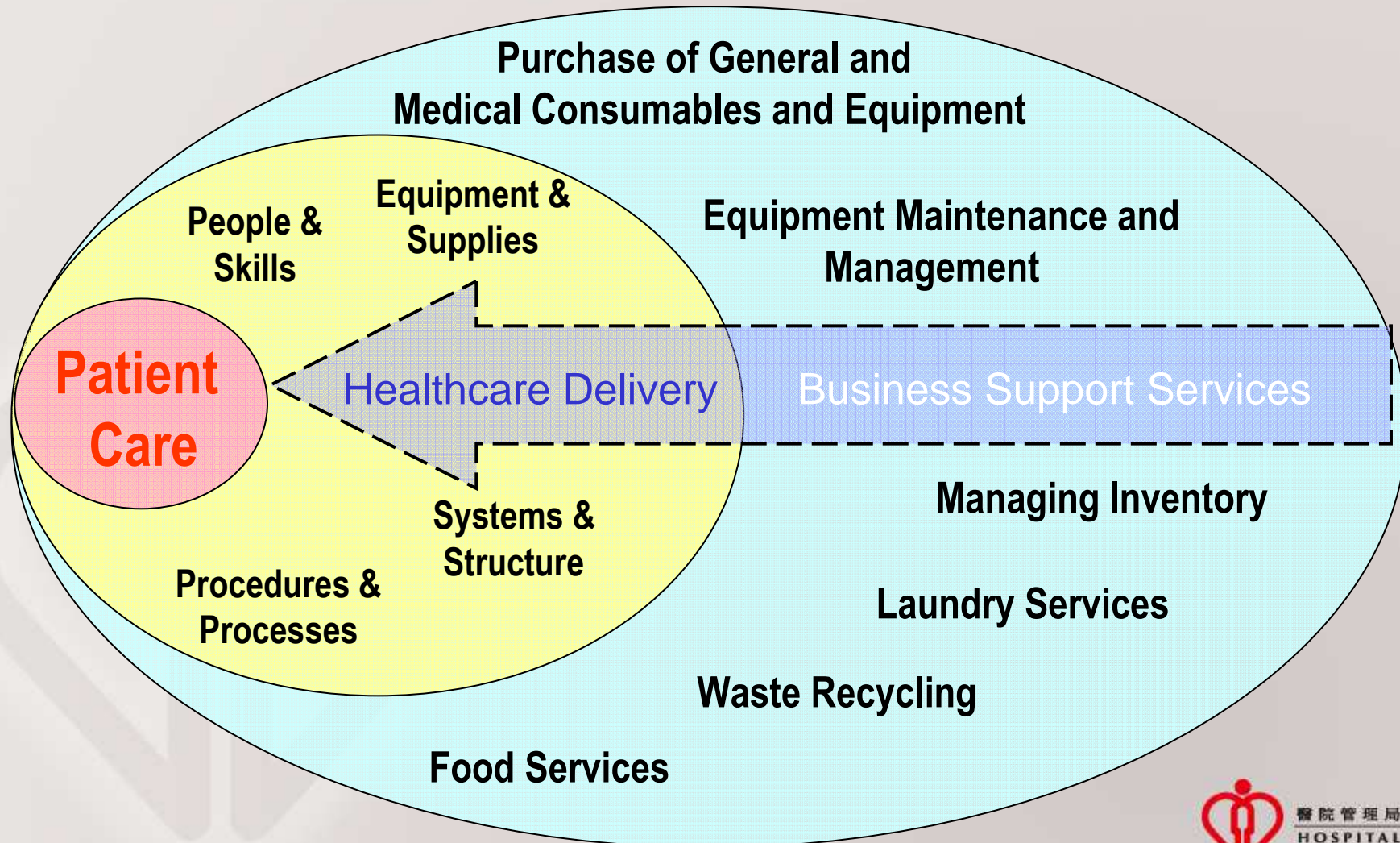
Distribution of Hospitals



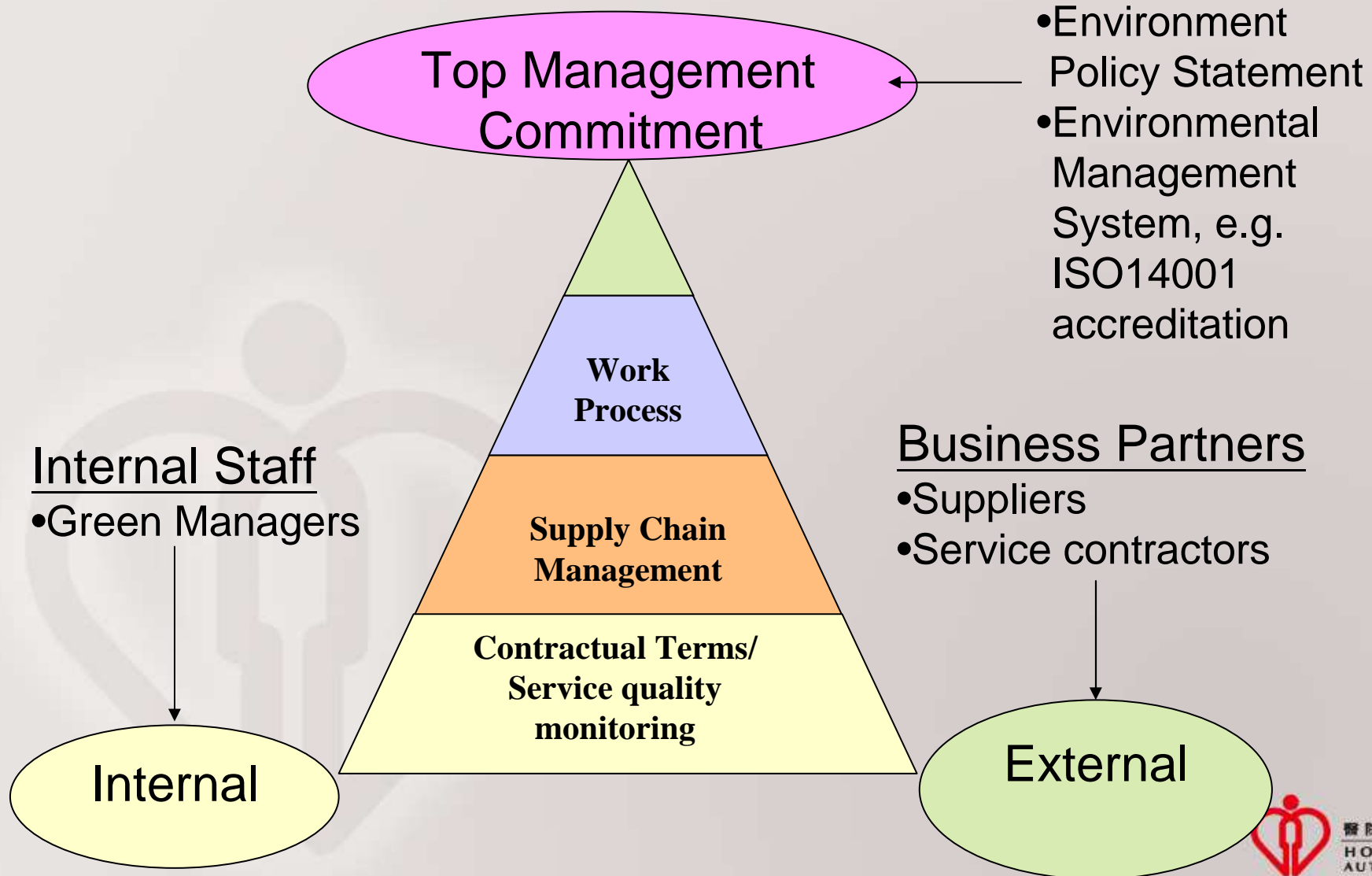
Hospital Authority Structure and Organization



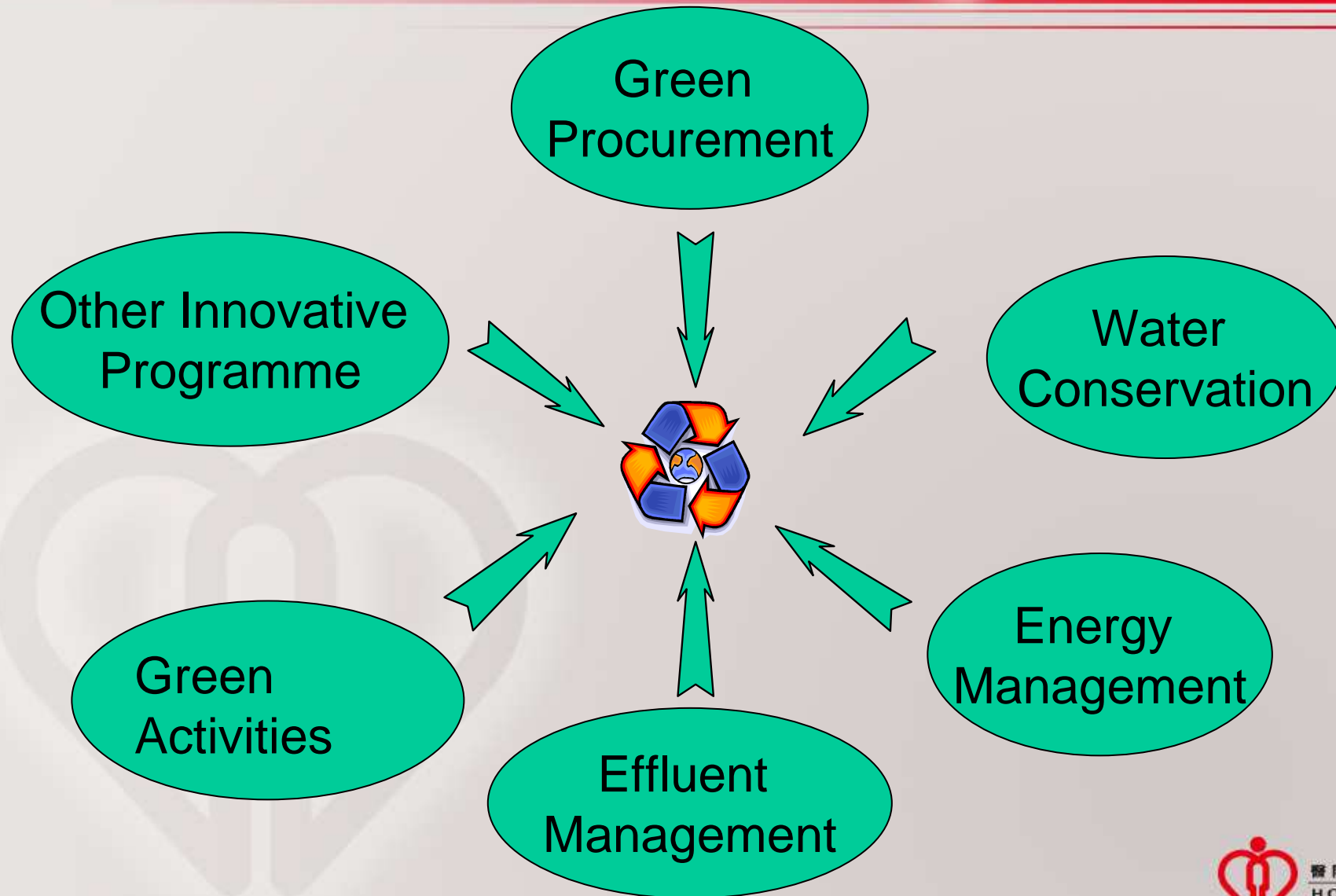
Business Support Services



Strategy on Green Management



Green Programme and Performance



Green Programme and Performance - Green Procurement



- Replacement of 80 vehicles (~ 50%)

- EURO II emission standards



- EURO IV emission standards



- Estimated reduction of pollutant emissions,
 - viz, 27% Carbon Monoxide;
 - 36% Hydrogen Carbon (Smog causation) and Nitrogen Oxide (acid rain and smog formation, a green house gas);
 - 49% particulate matters (causing adverse respiratory health effect)

Green Programme and Performance - Green Procurement



- For each ton of recycled paper products consumed:
 - 1 ton of wood
 - 14,400 Mega joules of energy
 - 32 m³ of water

- Use of recycle paper products



- Annual Consumption : 2,000 metric tons



- Estimated Savings:
 - 28,800 Giga joules of energy
 - 64,000 m³ of water

Green Programme and Performance - Water Conservation

Installation of:

- Dual flushing water tank.
- Water saving devices.
- Infra red water tap.



	Year		
% change from previous year	2004	2005	2006
No. of in-Patient	-4.18%	1.90%	2.09%
Water consumption rate	-7.03%	3.04%	-6.64%

Green Programme and Performance - Energy Management

Adoption of better practices:

- Ozone for all HA laundries



Benefits:

- Reduction in energy for hot water by 90%
- Reduction in cleaning chemical by 60%

Green Programme and Performance - Energy Management

Promotion of *switch-to-save*:

- Switch off unnecessary lightings and equipment
- Switch off lifts during non-peak hours

% change from previous year	Year		
	2004	2005	2006
No. of in-Patient	-4.18%	1.90%	2.09%
Energy consumption rate	9.74%	1.09%	-0.35%



Green Programme and Performance - Effluent Management

Collection of waste:

- Paper, plastic bottles, aluminum cans
- Moon cake tins
- Milk bottles



	Year		
	2004	2005	2006
Waste	kg		
Paper	550,398	799,536	799,140
Metal	12,180	16,888	21,898
Plastic	37,821	44,721	68,832
Clothes	5,429	10,325	9,869

Green Programme and Performance - Green Activities

- Green logo and slogan design competition
- Green outings held by individual clusters
- Used Book/Magazine/Newspaper Collection Program
- Green website

Green Programme and Performance -Innovative Programme



- Use of electrolyzed water in kitchen of PYNEH for cleaning.
- Annual savings in cleaning chemical: Approx. 43.9% per year.

External Partners

- Add in requirements on environmental protection, e.g. use less packaging materials
- Electronic Procurement
- Requirement in legal compliance to Environmental Protection
- Monitoring of utilization of utilities in provision of contracted out services



Way Forward

- Continual effort in minimizing the associated negative impact on the environment
- Promotion of Green Culture



Thank You

